



FireVu from D-Tec, the inventors and market leaders in Video Smoke Detection, resolves many of the detection problems that have previously perplexed the fire safety industry. Buildings and environments that have historically proven to be impossible or impracticable for point, beam or aspirating smoke detection systems can now be protected. Fire detection challenges such as smoke stratification, varying air flow and contaminated environments are overcome. FireVu “sees” the source of smoke and/or flames, identifying them anywhere within its field of view, therefore it can detect at any height or direction of flow. This “at source detection” is faster than other forms of detection as it is not waiting for the smoke to reach the detector.

It works by using standard CCTV cameras as sensors, with the video information fed into FireVu which uses extensive algorithms to analyse any movements. Should the motion patterns be recognised as smoke and/or flames, the system will alarm.

An operator can use a standard PC (with our viewing software loaded) to view individual or multiple camera images in real time. When an event occurs, a live image showing clear boundaries of the alarm area is displayed to the operator with the option to view pre-event recorded footage, invaluable in reacting to the incident in the quickest and safest way.

Each FireVu system has 8 camera inputs; Multiple FireVu's can be connected to the network creating a highly scalable Fire Detection system that can be controlled from a single control centre.



FEATURES

- 8 Camera inputs
- Bespoke embedded detection algorithms
- Identifies Smoke and Flame at source
- Visual confirmation of any alarm
- Unaffected by smoke / heat stratification or airflows/dilution
- Can utilise existing CCTV cameras
- Allows for smoke detection in hazardous / toxic environments
- Remote configuration and viewing
- Option to connect to a Remote Video Receiving Centre (RVRC) for remote surveillance and monitoring
- Up to 16 configurable detection zones per camera
- 18 configurable relay outputs
- 20 alarm inputs
- Evidential quality event recording
- Configurable fault monitoring relays
- Full Digital Video Recorder (DVR) capability
- Built in USB ports for archiving evidential material
- Bandwidth limitation avoids network congestion
- Reconfigurable zones can be easily modified to accommodate changes in use
- Meets BS 5839 part 1 requirements
- EN 50130-4 certification





SPECIFICATIONS

CAMERA INPUTS

8 Camera Inputs with Loop through connectors.

POWER SUPPLY

100-240Vac 50/60hz

CURRENT CONSUMPTION

350mA @ 240Vac

RELAY OUTPUTS

18 configurable relay outputs via 37-way (female) D Type rated at 24V 200mA
 4 fault relays via 9-way (female) D Type rated at 24V 200mA

MOUNTING OPTIONS

Desktop, shelf or rack
 19inch rack mounting plates included

OPERATING TEMPERATURE

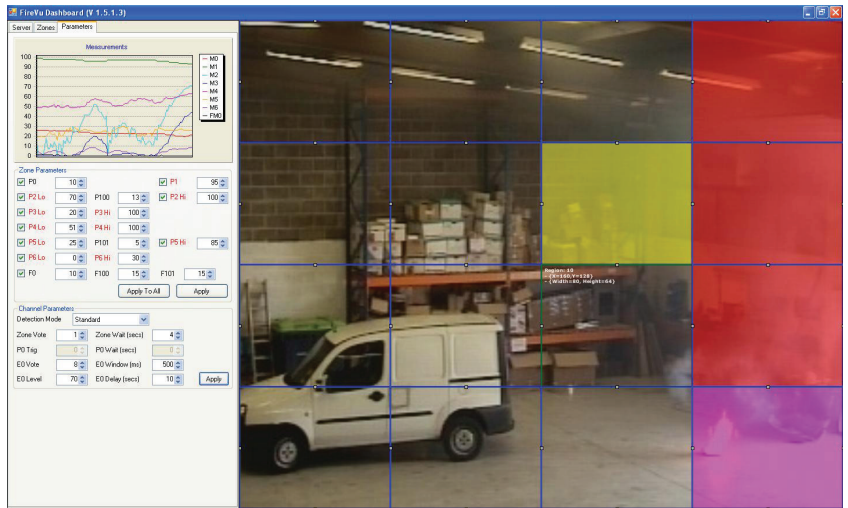
Minimum Operating Temperature: +5 C
 Maximum Operating Temperature: +40 C

OPERATING HUMIDITY RANGE

10-85% non condensation

ELECTRO-MAGNETIC COMPATIBILITY

Copy of declaration is available on request



Key



Smoke detected



Pre alarm - Smoke



Flame detected

Contact Details

Head Office

Detector Technologies, Unit 4, Delta Park, Wilsom Road, Alton, Hampshire, GU34 2 RQ, UK
 Tel: ++44 (0)870 4581517 Fax: +44 (0)870 4581518 info@dtec-fire.com



www.dtec-fire.com